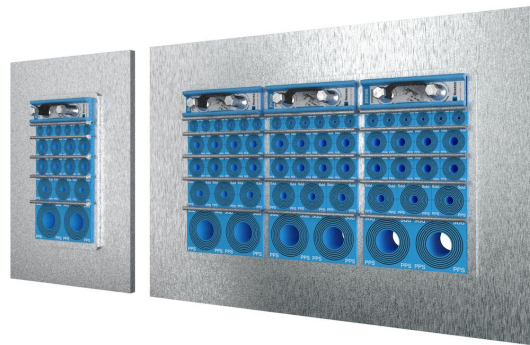




플라스틱 도관용 Roxtec SF 관통 장비

플라스틱 도관용 내화 관통 장비.

플라스틱 도관용 Roxtec SF는 단순 용접 및 내화 등급이 필요한 구조물에 용접하기 위한 관통 장비입니다. 용접 중 프레임이 바닥 개구부를 통해 떨어지는 것을 방지하는 플랜지가 있으며, 바닥 적용 분야에서 폐쇄되고 안전한 공간을 제공합니다. 직사각형 강철 프레임을 사용하면, 케이블 밀도가 높은 도관을 라우팅할 수 있습니다. 플라스틱 도관용 Roxtec RM PPS 셸링 모듈에는 설치를 단순화하기 위해 해당 NW 크기 번호가 표시되어 있습니다. RM PPS 모듈은 동일한 프레임에 도관과 케이블을 혼합하여 일반 RM 모듈과 결합할 수 있습니다.



- 유지 및 검사 용이
- 예비 공간 포함 제공

제품 특징점



내화



IP/UL NEMA

설치 구조



금속

장착 유형



용접

등급 및 인증

화재

- EN 45545 E60에 따른 E/티 등급

강도

- IP 66/67

프레임 치수

mm/kg

아래의 프레임 변화는 제한된 선택입니다. 프레임 및 구성의 전체 범위를 보려면 [roxtec.com](https://www.roxtec.com)을 방문하십시오.

구성	프레임 입구	모듈설치공간	외부 치수 WxHxD	홀 치수 w x h	무게	Art. 번호
SF 6x1 ALU	1	120 x 180	260.5 x 358 x 60	201(+15/-15) x 298(+15/-15)	2.9	SFF6000000131
SF 6x2 ALU	2	120 x 180	391 x 358 x 60	332(+15/-15) x 298(+15/-15)	4.2	SFF6000000231
SF 6x3 ALU	3	120 x 180	521.5 x 358 x 60	462(+15/-15) x 298(+15/-15)	6	SFF6000000331
SF 6x1 PRIMED	1	120 x 180	260.5 x 358 x 60	201(+15/-15) x 298(+15/-15)	7.6	SFF6000000112
SF 6x2 PRIMED	2	120 x 180	391 x 358 x 60	332(+15/-15) x 298(+15/-15)	12	SFF6000000212
SF 6x3 PRIMED	3	120 x 180	521.5 x 358 x 60	462(+15/-15) x 298(+15/-15)	16.4	SFF6000000312
SF 6x1 AISI316	1	120 x 180	260.5 x 358 x 60	201(+15/-15) x 298(+15/-15)	8.2	SFF6000000121
SF 6x2 AISI316	2	120 x 180	391 x 358 x 60	332(+15/-15) x 298(+15/-15)	12.2	SFF6000000221
SF 6x3 AISI316	3	120 x 180	521.5 x 358 x 60	462(+15/-15) x 298(+15/-15)	16.6	SFF6000000321



씰링 컴포넌트 데이터

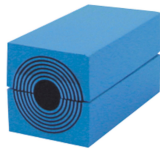
씰링 컴포넌트



윤활제



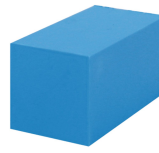
RM PPS 모듈(Multidiame



RM 모듈(Mult idiameter™



Wedge 및 We

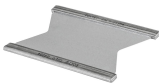


RM 솔리드 모듈



용접 도구

액세서리



스태이플레이트

자세한 내용은 [roxtec.com](https://www.roxtec.com)을 방문하십시오.

The product information provided by Roxtec does not release the purchaser of the Roxtec system, or part thereof, from the obligation to independently determine the suitability of the products for the intended process, installation and/or use. Roxtec gives no guarantee for the Roxtec system or any part thereof and assumes no liability for any loss or damage whatsoever, whether direct, indirect, consequential, loss of profit or otherwise, occurred or caused by the Roxtec systems or installations containing components not manufactured by an authorized manufacturer and/or occurred or caused by the use of the Roxtec system in a manner or for an application other than for which the Roxtec system was designed or intended. Roxtec expressly excludes any implied warranties of merchantability and fitness for a particular purpose and all other express or implied representations and warranties provided by statute or common law. User determines suitability of the Roxtec system for intended use and assumes all risk and liability in connection therewith. In no event shall Roxtec be liable for indirect, consequential, punitive, special, exemplary or incidental damages or losses. The Roxtec products are offered and sold in accordance with the conditions of the Roxtec General Terms of Sales. The latest version of the Roxtec General Terms of Sales can be downloaded from <https://www.roxtec.com/en/about-us/about-roxtec/general-terms-of-sales/> We reserve the right to make changes to the product and technical information without further notice. Any errors in print or entry are no claims for indemnity. The content of this publication is the property of Roxtec International AB and is protected by copyright. This document was generated on: 2024-04-25